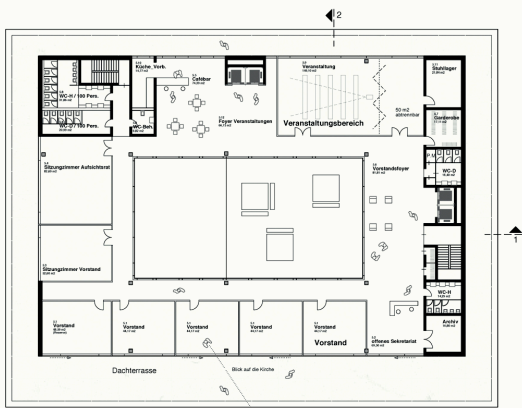




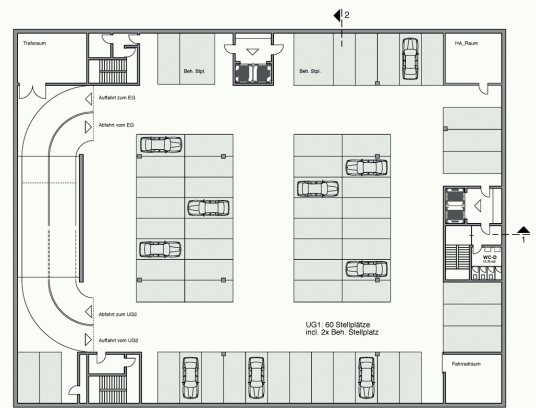
Perspektive Vorstandsetage



Perspektive St.-Anton-Strasse



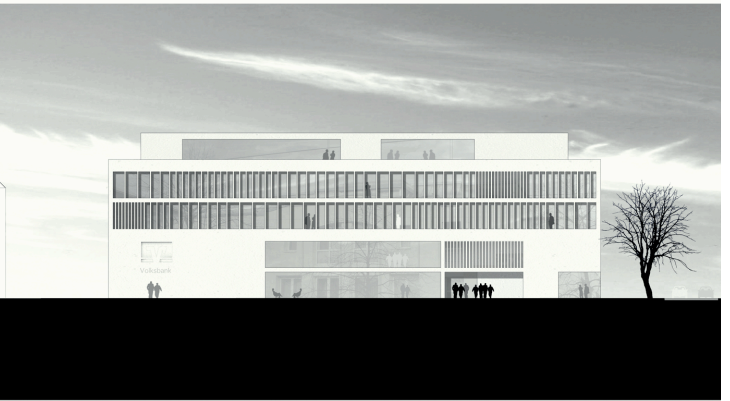
Grundriss Staffelgeschoss M.1:200



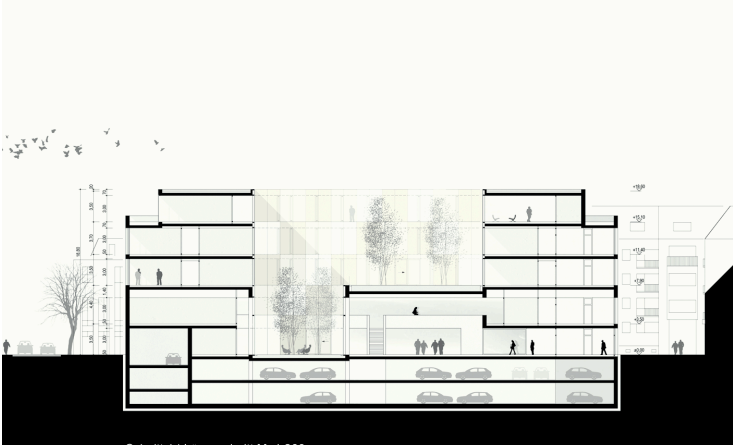
Grundriss 1. Untergeschoss M.1:200



Ansicht West | Schwambornplatz M. 1:200



Ansicht Nord | St.-Anton-Strasse M. 1:200



Schnitt 1 | Langschnitt M. 1:200



Grundriss 2. Untergeschoss M.1:200